

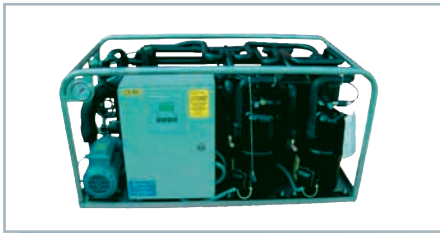
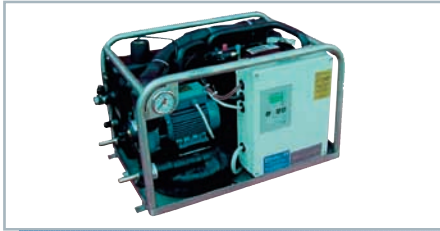


Marine air-conditioning

WATER CHILLERS PCWM/FCL



The Sign of Comfort



Model	Cooling Capacity (Btu/h)	Heating Capacity (Btu/h)	Ampere		Power Consumption (kw)	Weight (kg)	Dimensions (mm)		
			220/1/50	380/3/50			Length	Width	Height
4501	18.000	22.500	12,90	-	1,80	65	660	450	400
6001	24.000	30.000	15,40	5,55	3,00	95	660	450	400
7501	30.000	37.500	17,90	7,45	3,25	95	750	450	400
9001	36.000	45.000	19,20	7,96	3,50	100	800	500	500
9002	36.000	45.000	20,40	-	4,20	135	1000	500	500
12001	48.000	60.000	-	10,00	5,00	125	1000	500	500
12002	48.000	60.000	28,80	10,75	5,20	150	1000	500	500
15001	60.000	75.000	-	11,70	5,50	130	1000	500	500
15002	60.000	75.000	30,30	12,36	6,00	160	1000	500	500
18002	72.000	90.000	34,80	13,80	6,80	190	1050	550	550
18003	72.000	90.000	36,80	13,80	7,60	220	1100	600	500
22503	90.000	112.500	42,80	14,90	8,90	230	1100	600	500
24002	96.000	120.000	-	18,70	9,50	220	1050	600	550
27003	108.000	135.000	50,50	23,90	9,00	260	1050	600	550
30002	120.000	150.000	-	21,50	10,50	245	1050	600	550
30004	120.000	150.000	62,80	20,60	11,50	300	1200	700	550
36003	144.000	180.000	-	26,90	13,80	350	1250	730	600
36004	144.000	180.000	66,80	23,40	12,00	315	1200	700	550
45003	180.000	225.000	-	29,90	15,75	370	1250	730	600
60004	240.000	300.000	-	40,00	23,00	450	1500	830	600

FRESH AIR MAKEUP



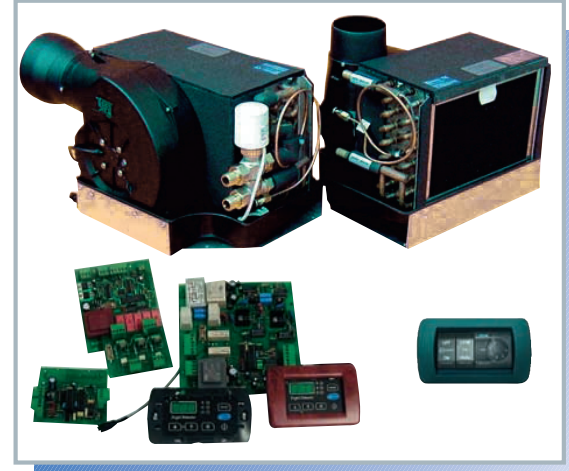
WATER CHILLERS WM-S/FCL



Model	Cooling Capacity (Btu/h)	Heating Capacity (Btu/h)	Ampere		Power Consumption (kw)	Weight (kg)	Dimensions (mm)		
			220/1/50	380/3/50			Length	Width	Height
30001	120.000	120.000	-	-	9,90	400	1650	600	650
60001	240.000	240.000	-	-	16,00	520	1650	750	650
60002	240.000	240.000	-	-	19,80	750	2000	800	700
120002	480.000	480.000	-	-	32,00	950	2400	1000	850
180002	720.000	720.000	-	-	43,50	1300	2400	800	1400
240002	960.000	960.000	-	-	58,00	1500	2800	800	1500

FAN-COIL AP

Model	Cooling Capacity (Btu/h)	Heating Capacity (Btu/h)	Ampere		Power Consumption (W)	Weight (kg)	Dimensions (mm)		
			220/1/50	380/3/50			Length	Width	Height
APM	3.400	3.400	0,40	-	90	7,0	370	230	200
AP1	4.480	4.480	0,46	-	105	7,5	370	275	280
AP3	6.200	6.200	0,46	-	105	7,5	435	275	280
AP5	9.200	9.200	0,58	-	130	9,0	435	275	335
AP8	12.500	12.500	0,90	-	195	11,0	435	330	370
AP10	16.000	16.000	1,00	-	225	15,0	520	330	370
AP12	24.000	24.000	1,25	-	295	18,0	550	350	400



FAN-COIL ALU

Model	Cooling Capacity (Btu/h)	Heating Capacity (Btu/h)	Ampere		Power Consumption (W)	Weight (kg)	Dimensions (mm)		
			220/1/50	380/3/50			Length	Width	Height
Mini	2.464	2.464	0,84	-	185	8,0	400	265	185
Compact	4.320	4.320	0,84	-	185	9,5	510	285	185
Junior	5.880	5.880	0,31	-	70	10,5	525	410	210
Giant 4	9.320	9.320	0,36	-	80	13,0	585	465	235
Giant 5	14.800	14.800	0,72	-	160	18,5	785	465	235



PACKAGE SYSTEM DXC-M

Model	Cooling Capacity (Btu/h)	Heating Capacity (Btu/h)	Ampere		Power Consumption (kw)	Weight (kg)	Dimensions (mm)		
			220/1/50	380/3/50			Length	Width	Height
1751	7.000	8.000	3,80	-	0,85	33	500	310	280
2501	10.000	11.400	5,90	-	1,30	38	500	310	310
4001	16.000	18.200	9,00	-	2,00	45	520	360	350



INSTALLATION COMPONENTS



DENİZMAR

DENİZMAR İç ve Dış Ticaret Ltd. Şti.
895 Sokak No: 16 Hisarönü - İZMİR
Tel: +90.232.483 42 18 • Fax: 484 68 42
www.denizmar.com • info@denizmar.com